



19"PATCH PANEL Quick Start Guide

TLY-PATPAN-QSG-1106-03

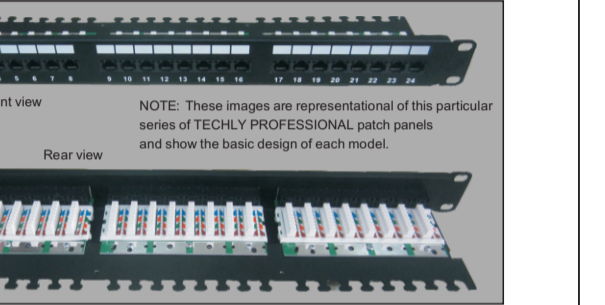
2



Thank you for purchasing this TECHLY PROFESSIONAL 19" Patch Panel, one of a series of easy-to-use panels that let you consolidate your network cables to reduce clutter. Whether you have selected a model for use with Cat5e or Cat6 cables, unshielded twisted pair (UTP) or fully shielded, from 12-port to 96-port, you'll appreciate the benefits of convenience and reliability delivered by these quality features.

- Solid and reliable terminations for copper cabling featuring gold-plated jack contacts
- Compatible with both 110 and Krone punch-down tools
- Supports 22 to 26 AWG stranded and solid wire
- Cat6 performance (if applicable) is in compliance with the ANSI/TIA/EIA 568 C.2-1 standard
- Ideal for Ethernet, Fast Ethernet and Gigabit Ethernet network applications
- Connects RJ-45 ports to a network
- Meets 19" rackmount standards
- Lifetime Warranty

The images on the following pages of this guide show you the basic installation procedures for connecting your patch panel to your computer cables.
NOTE: The images on the following pages are representative of all the variously sized (based on the number of connector ports) patch panels in this TECHLY PROFESSIONAL series.



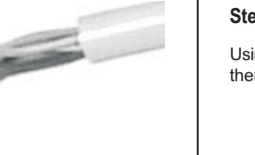
NOTE: These images are representational of this particular series of TECHLY PROFESSIONAL patch panels and show the basic design of each model.

3

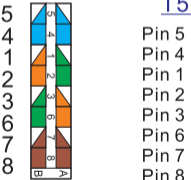


Step 1

At the end of each cable to be connected to the patch panel, strip away 25–30 mm (approx. 1") of the outer jacket, then separate the inner leads into four (4) pairs.



IDC(KRONE)



Color-Coding Reference

T568A

- Pin 5 White/Blue
- Pin 4 Blue
- Pin 1 White/Green
- Pin 2 Green
- Pin 3 White/Orange
- Pin 6 Orange
- Pin 7 White/Brown
- Pin 8 Brown

T568B

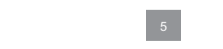
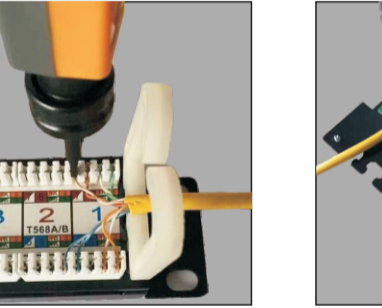
- Pin 5 White/Blue
- Pin 4 Blue
- Pin 1 White/Orange
- Pin 2 Orange
- Pin 3 White/Green
- Pin 6 Green
- Pin 7 White/Brown
- Pin 8 Brown



4

Step 2

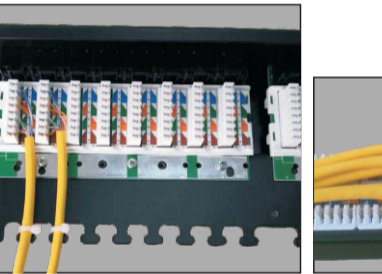
Using the IDC color-coding reference (see previous page), position each T568A or T568B wire, then connect each wire to the patch panel using punch-down tool as shown below.



5

Step 3

Place each cable in its associated holder (as shown below) to keep them neatly organized, then place/position the patch panel as desired.



6

Specifications

Standards

- IEEE 802.3 (10Base-T Ethernet)
- IEEE 802.3u (100Base-TX Fast Ethernet)
- IEEE 802.3ab (1000Base-T Gigabit Ethernet)

Certifications

- RoHS compliant

Environmental

- Operating temperature: -40 – 68°C

Package Contents

- Patch Panel
- 4 mounting screws
- Quick start guide
- Nylon cable tie



7



TECHLY PROFESSIONAL offers a complete line of active and passive networking products. Ask your local computer dealer for more information or visit

www.techly.com

Copyright © TECHLY PROFESSIONAL
All products mentioned are trademarks or registered trademarks of their respective owners.