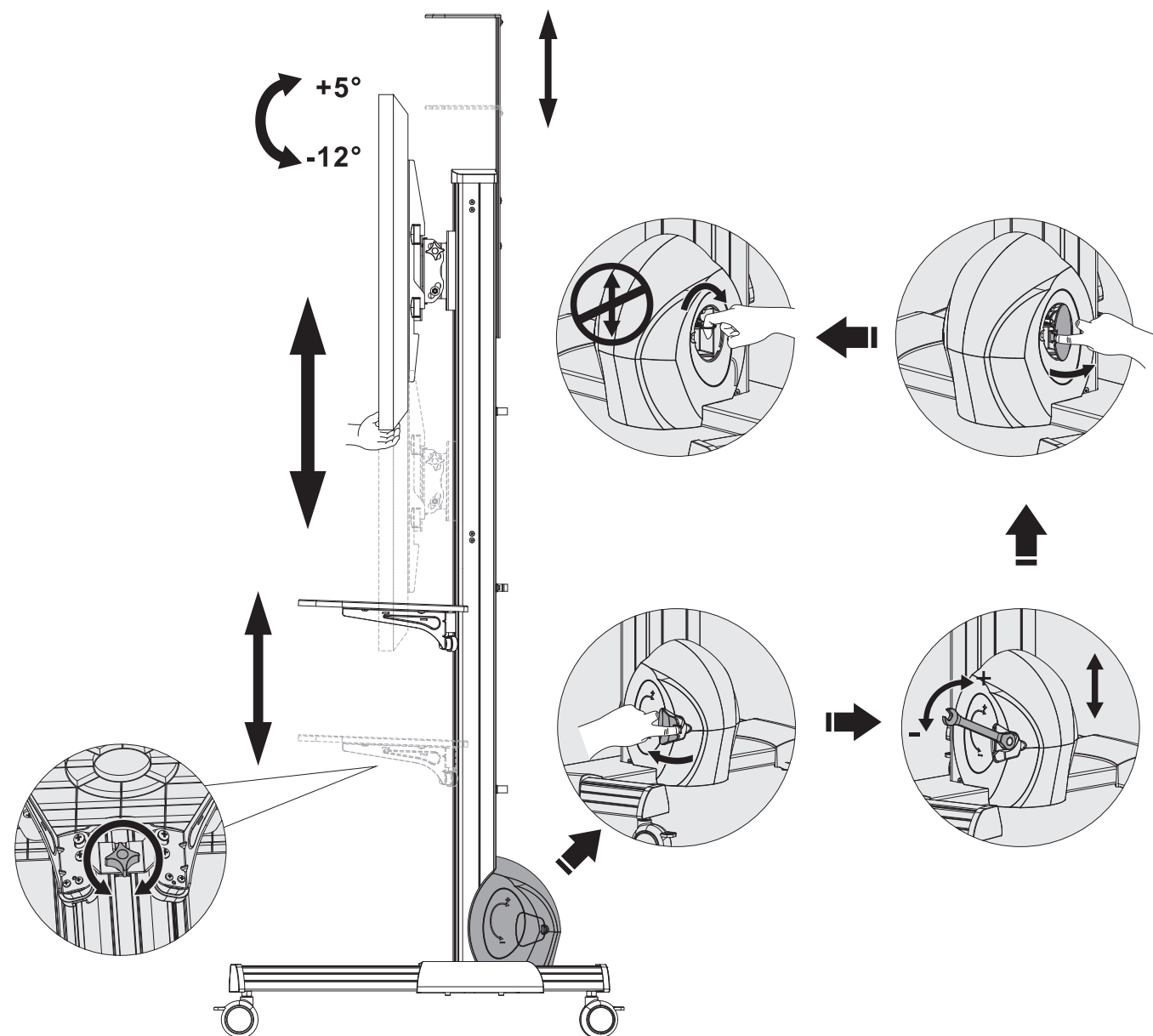
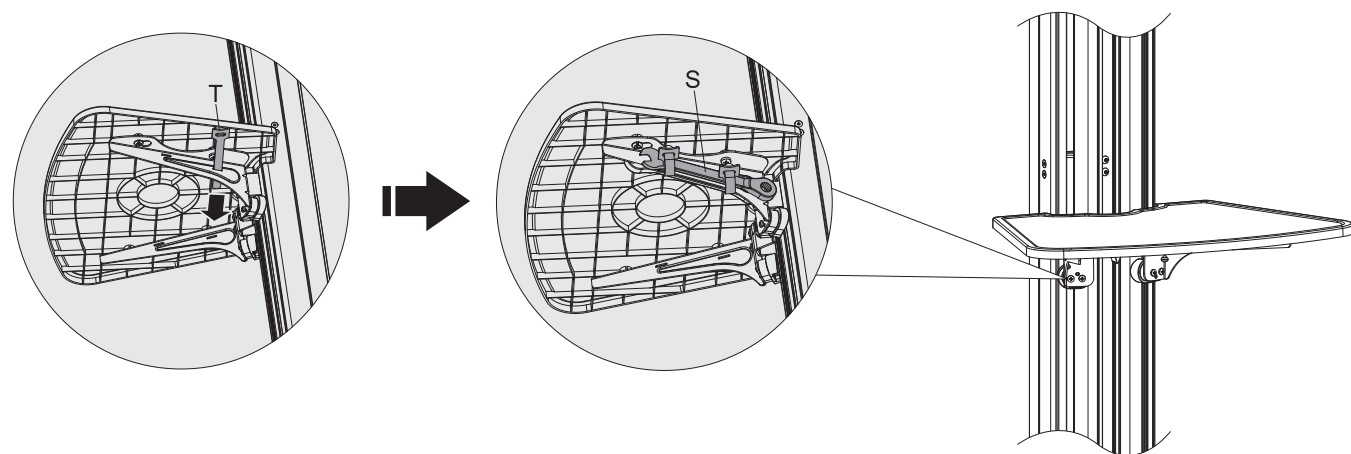


12. Adjustment



13. Placing the Wrench



Put the velcro through the holes to fix the wrench.

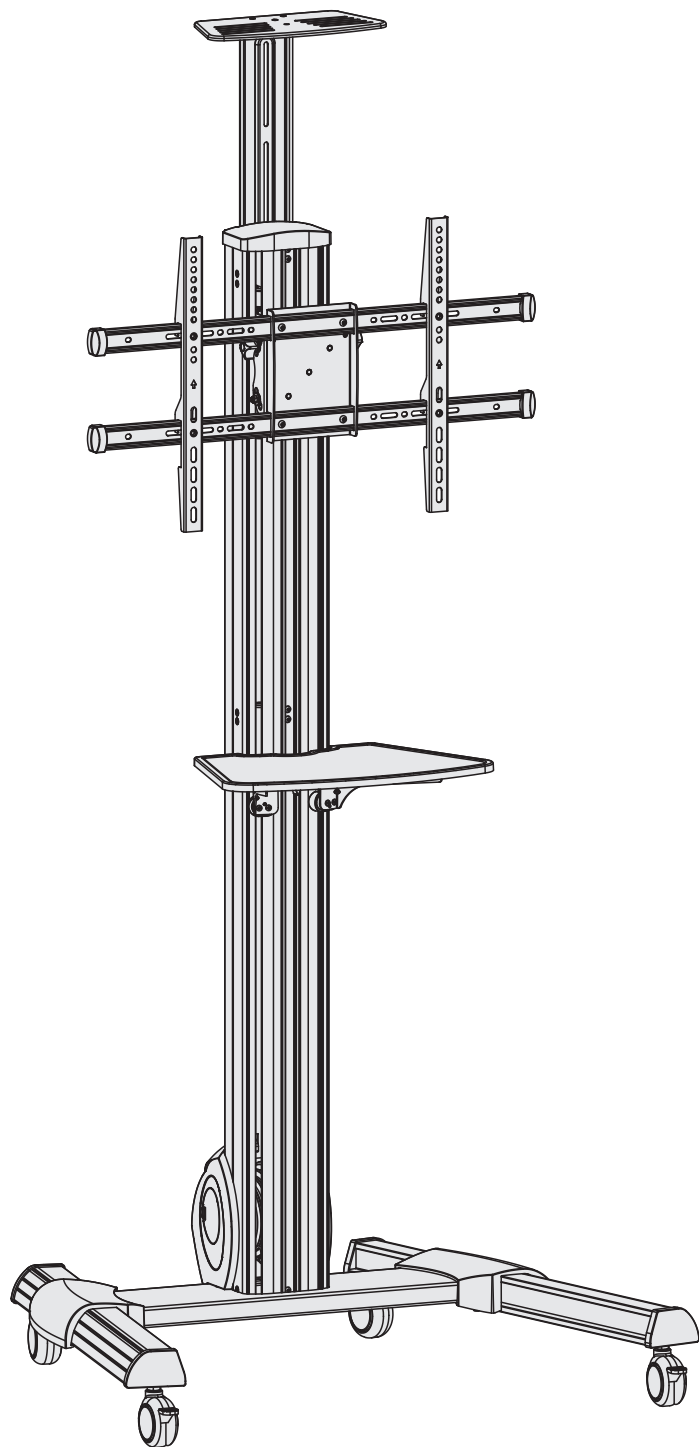
Maintenance

- Check that the bracket is secure and safe to use at regular intervals(at least every three months).
- Please contact your distributor if you have any questions.

TV Floor Cart and Accessories



CAUTION: DO NOT EXCEED RATED LISTED WEIGHT. SERIOUS INJURY OR PROPERTY DAMAGE MAY OCCUR!



INSTALLATION MANUAL



200x200/300x300
400x200/400x300
400x400/600x400



rated
for TV
8-20kg
18-44lbs

rated
for DVD
5kg/11lbs

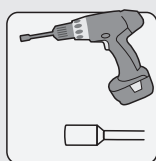
rated
for CAMERA
5kg/11lbs

NOTE: Read the entire instruction manual before you start installation and assembly.

⚠ WARNING

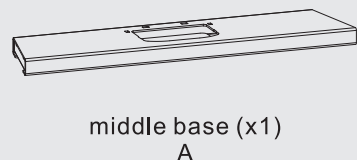
- Do not begin the installation until you have read and understood all the instructions and warnings contained in this installation sheet. If you have any questions regarding any of the instructions or warnings, please contact your local distributor.
- This mounting bracket was designed to be installed and utilised **ONLY** as specified in this manual. Improper installation of this product may cause damage or serious injury.
- This product should only be installed by someone with good mechanical ability who has basic building experience and fully understands this manual.
- Make sure that the supporting surface will safely support the combined weight of the equipment and all attached hardware and components.
- Always use an assistant or mechanical lifting equipment to safely lift and position the equipment.
- Tighten screws firmly, but do not over tighten. Over tightening can cause damage to the items, This greatly reduces their holding power.
- This product is intended for indoor use only. Using this product outdoors could lead to product failure and personal injury.

Required for Installation



Component Checklist

IMPORTANT: Ensure that you have received all parts according to the component checklist prior to installation. If any parts are missing or faulty, telephone your local distributor for a replacement.



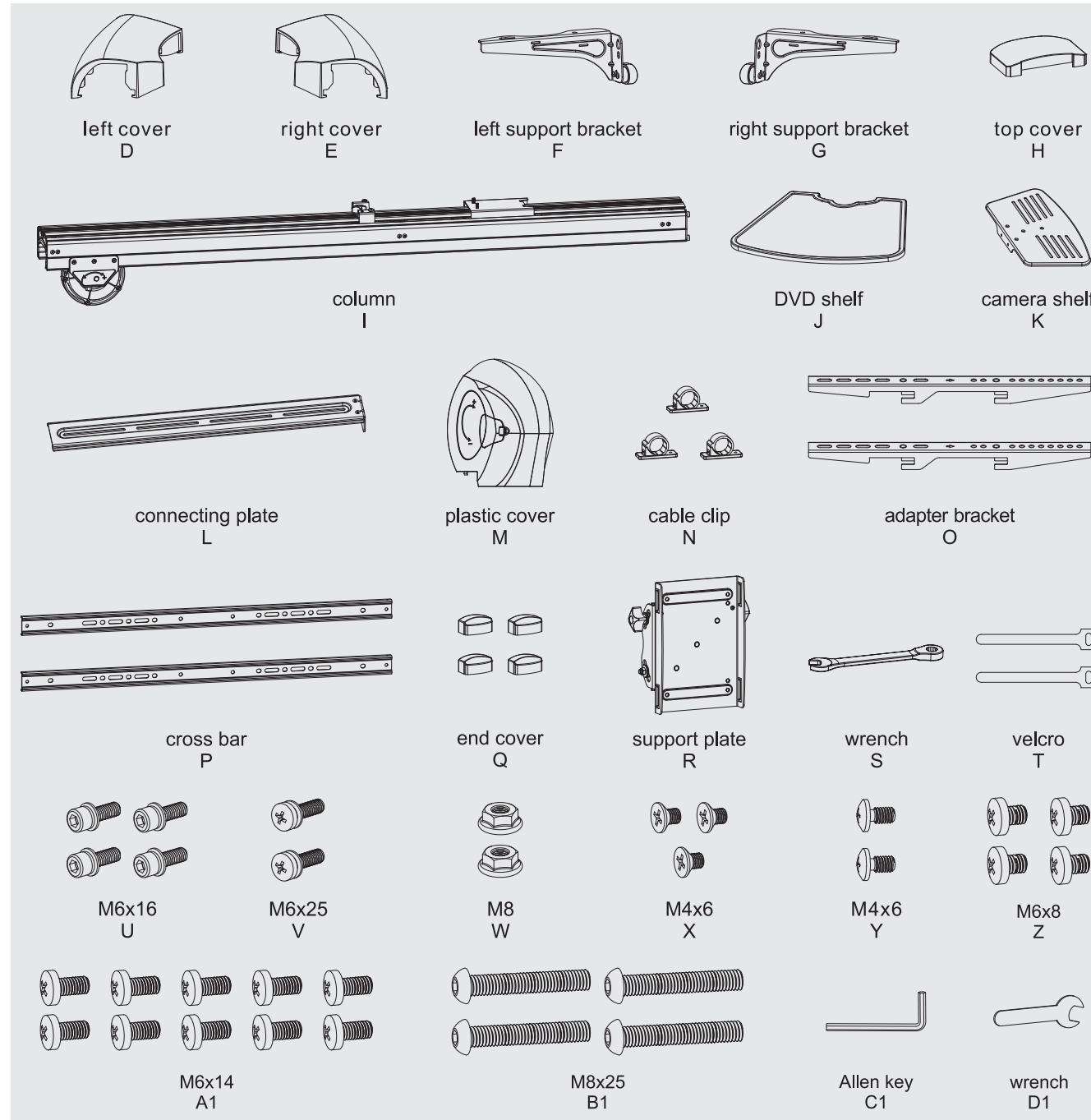
middle base (x1)
A



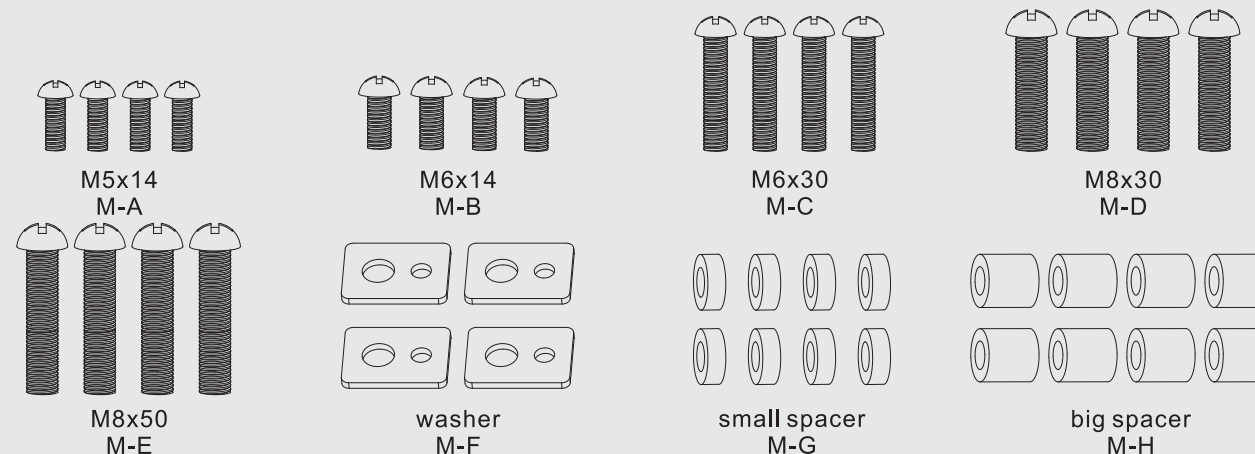
left leg (x1)
B



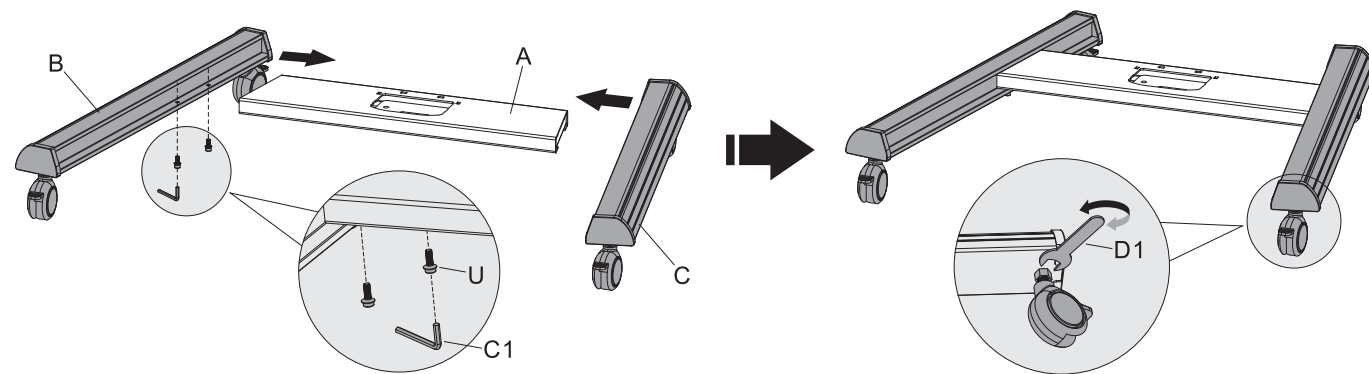
right leg (x1)
C



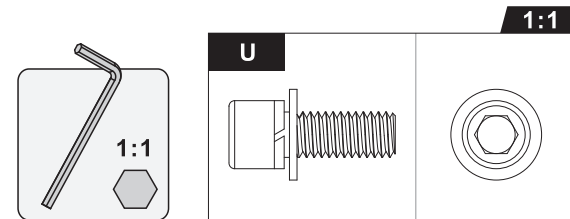
Package M



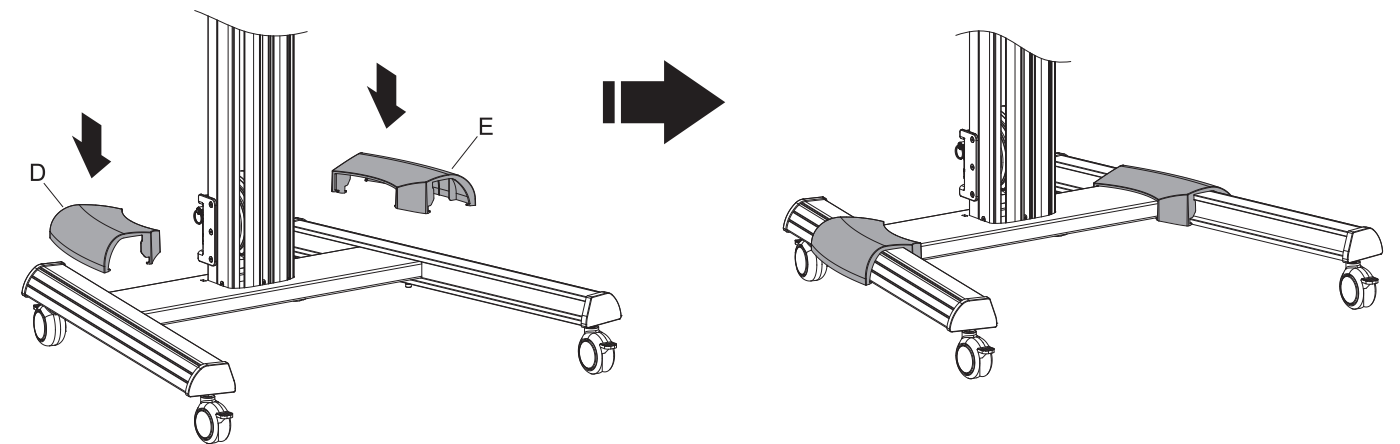
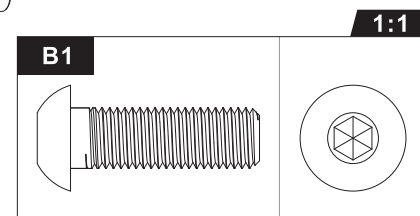
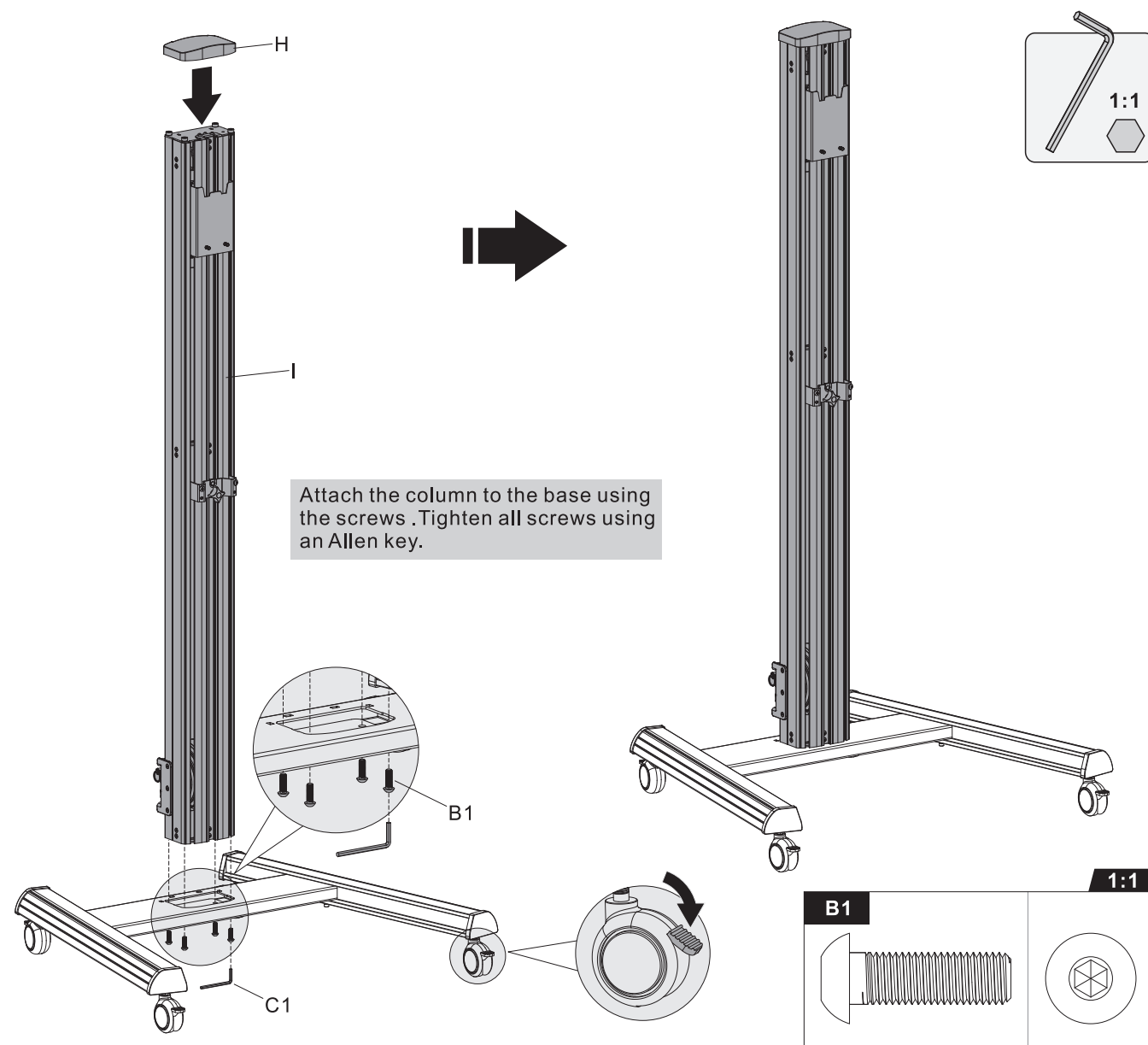
1. Assembling the Base



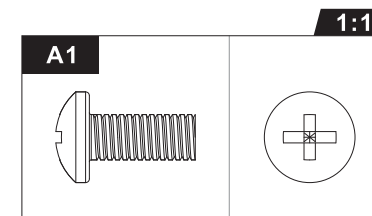
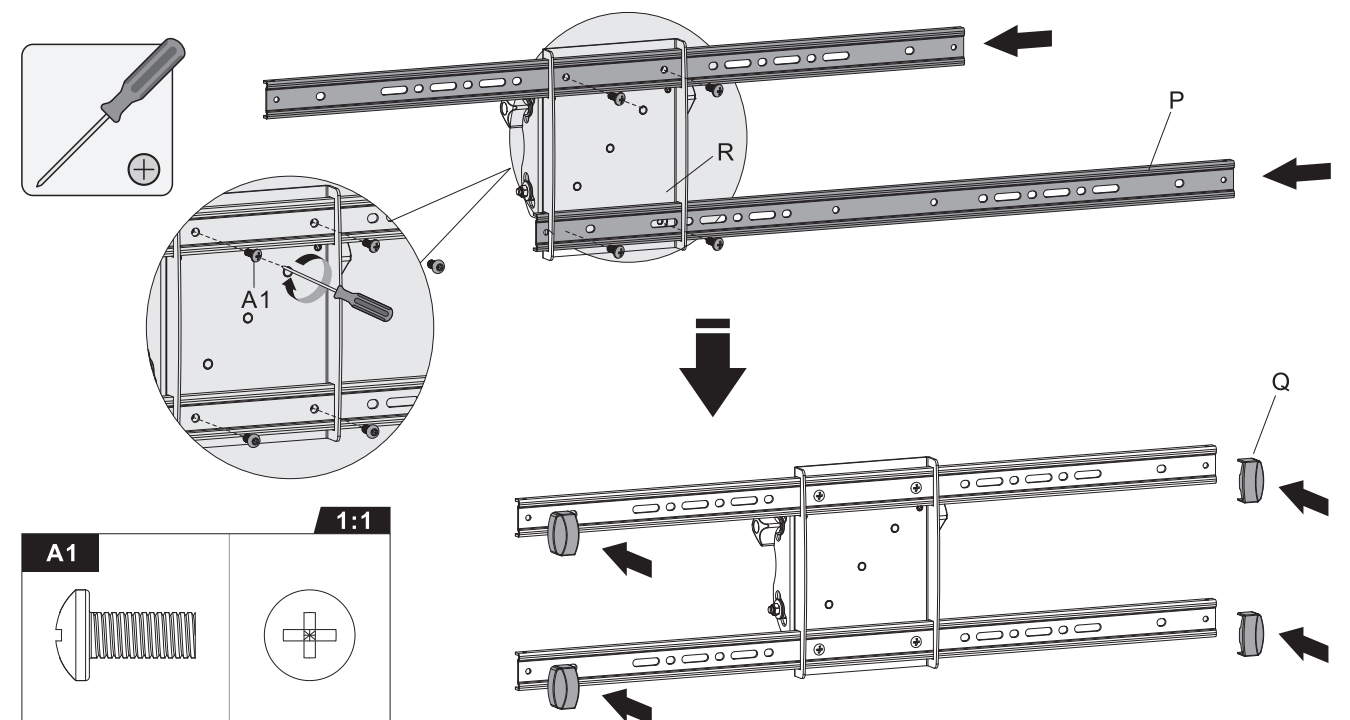
- Insert the right leg into the base. Align the holes in the right leg to the holes in the base. Secure with the screws. Repeat this step for the left leg.
- Each caster can be adjusted independently for fine tuning. Slightly turn the nut to lower or raise the base.



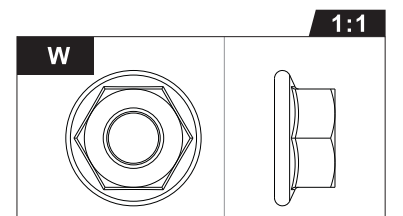
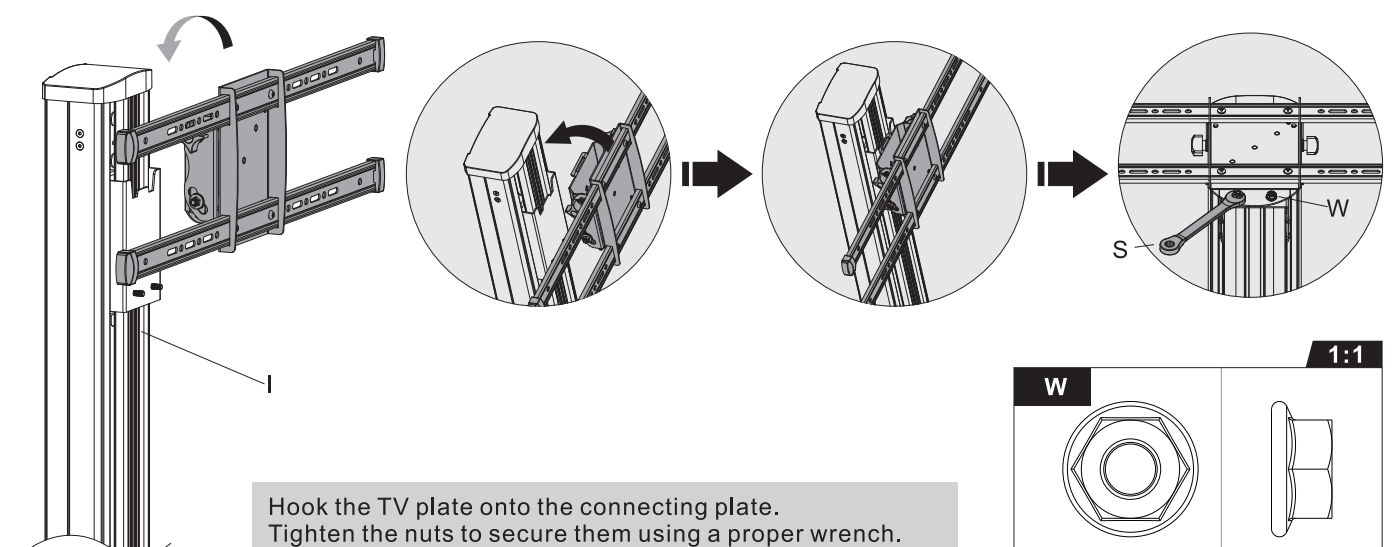
2. Attaching the Column to the Base



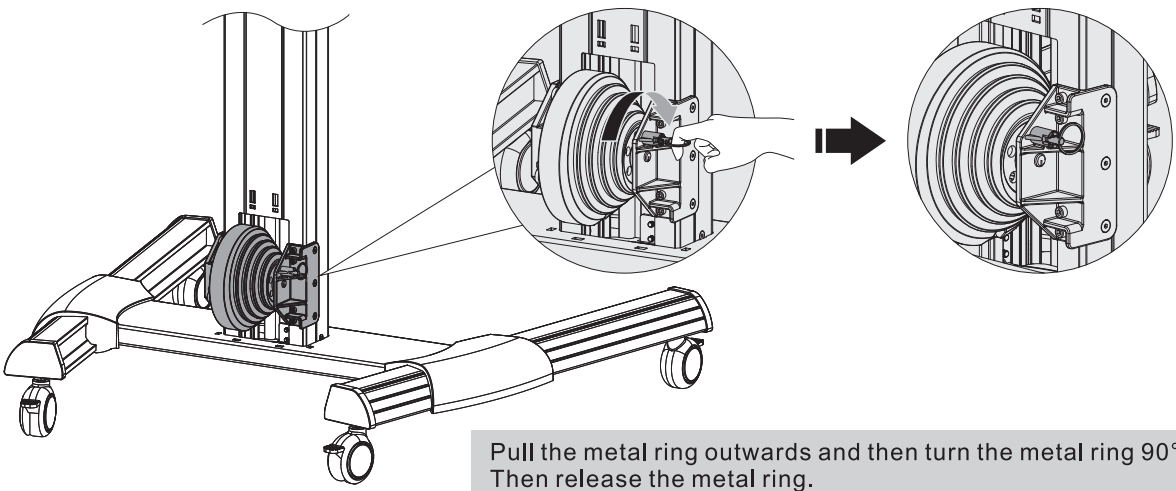
3. Installing the TV Plate



Insert the cross bar into the support plate. Align the holes in the bar to the holes in the support plate. Secure with the screws. Install the end covers in the end of the bars.



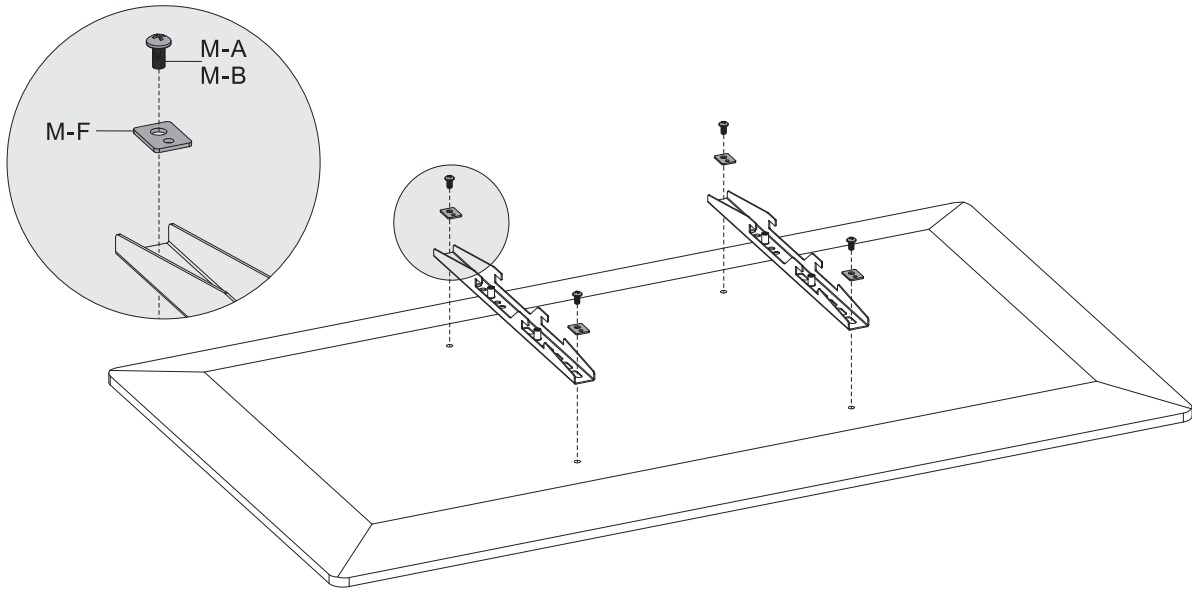
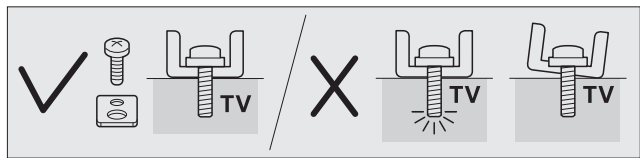
4. Adjustment



Pull the metal ring outwards and then turn the metal ring 90° clockwise. Then release the metal ring.

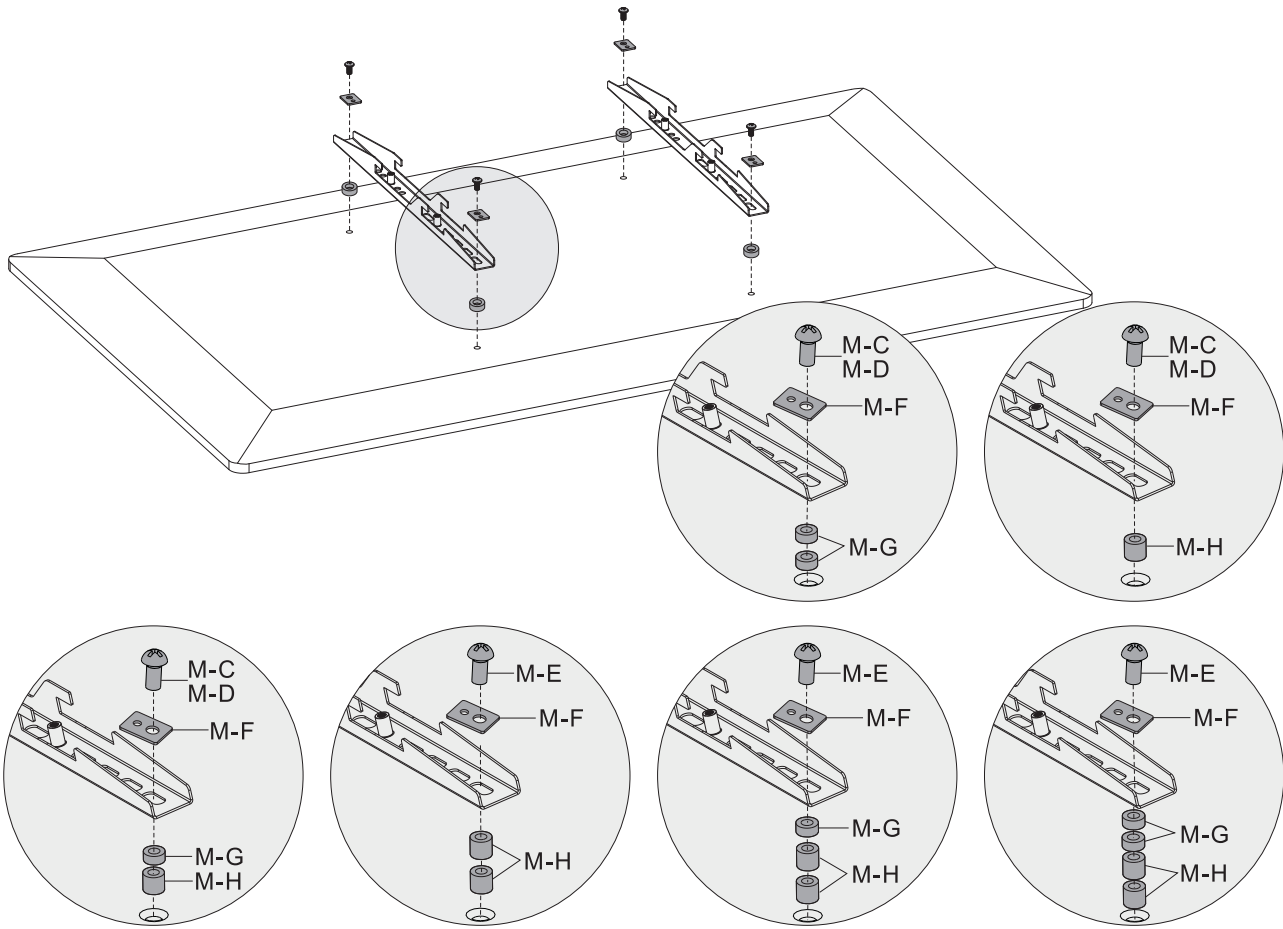
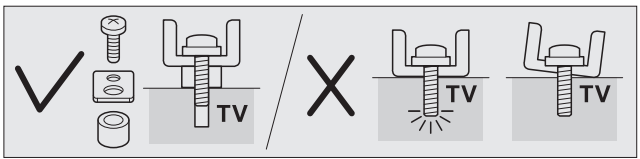
5. Installing the Adapter Brackets

5-1 For Flat Back Screens



M-A		M-B	
M-F			

5-2. For Bump-out or Recessed Back Screens



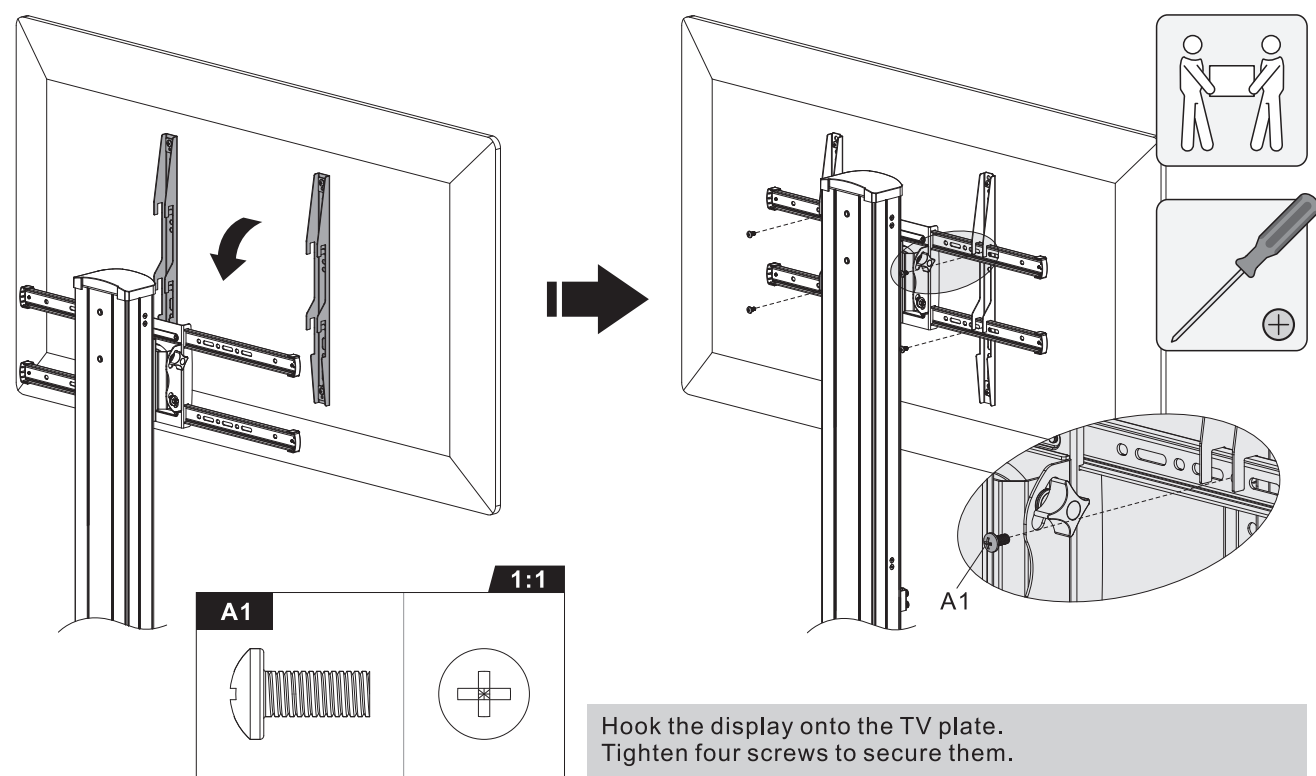
M-C		M-D	
M-E		M-F	
M-G		M-H	

Note: Choose the appropriate screws, washers and spacers (if necessary) according to the type of screen.

- Position the adapter brackets as close as possible to the center of the display.
- Screw the adapter brackets onto the display.

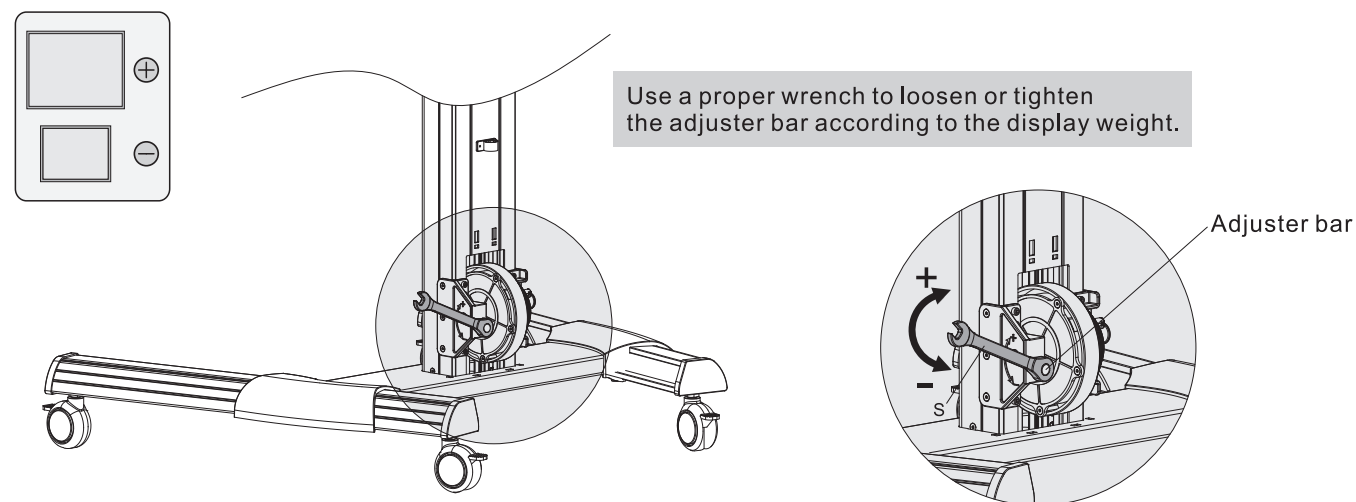
Tighten all screws but do not over tighten.

6. Installing the Display

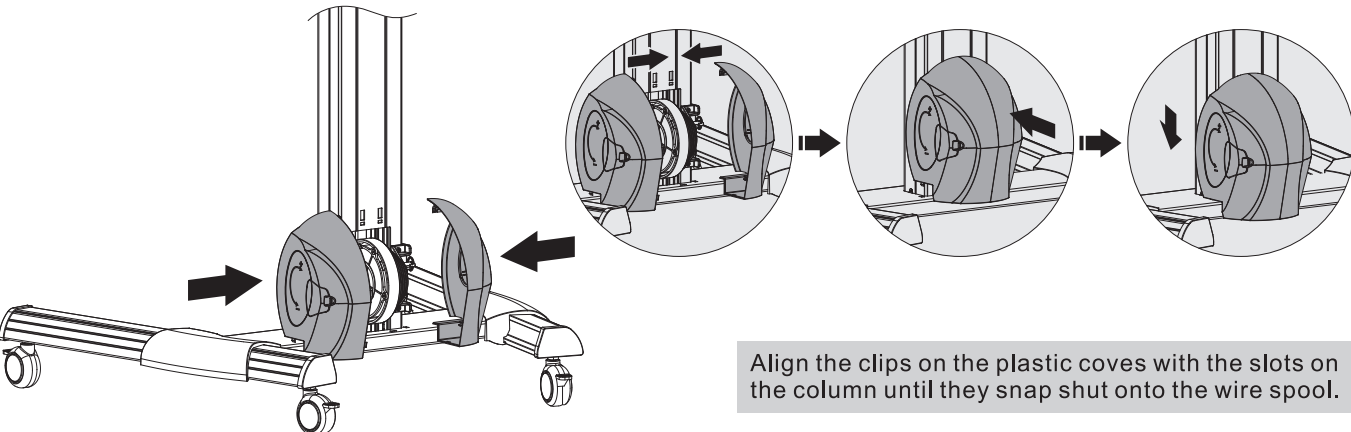
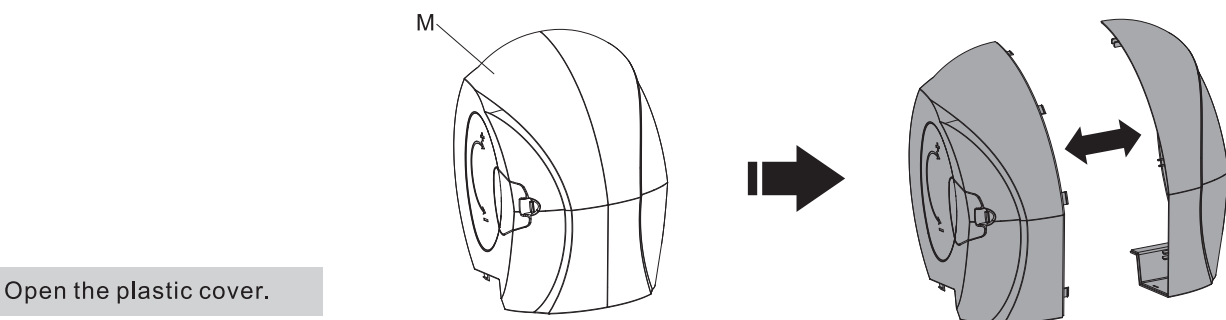


Important: Make sure the display is mounted correctly and the screws are tightened safely before releasing the display.

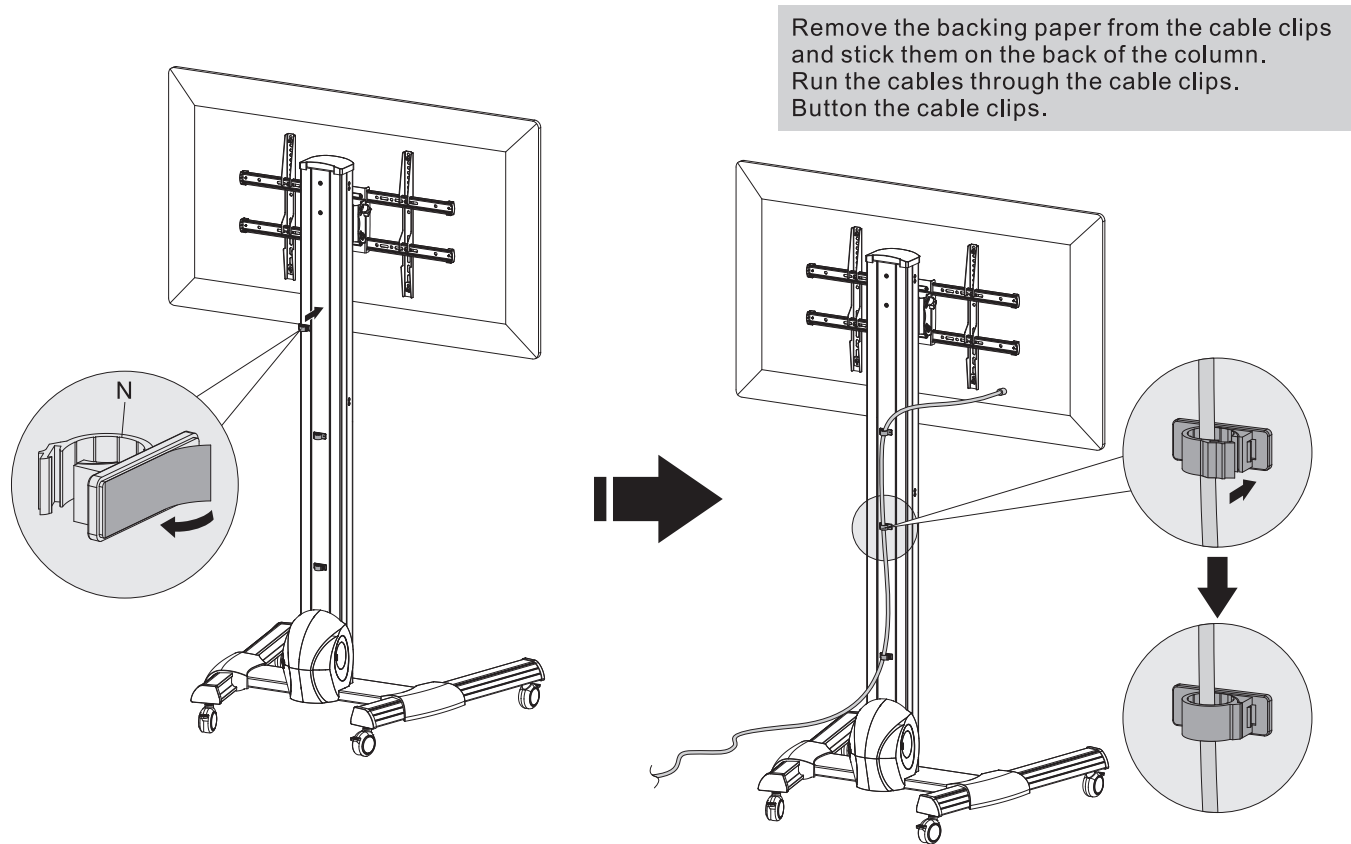
7. Tension Adjustment



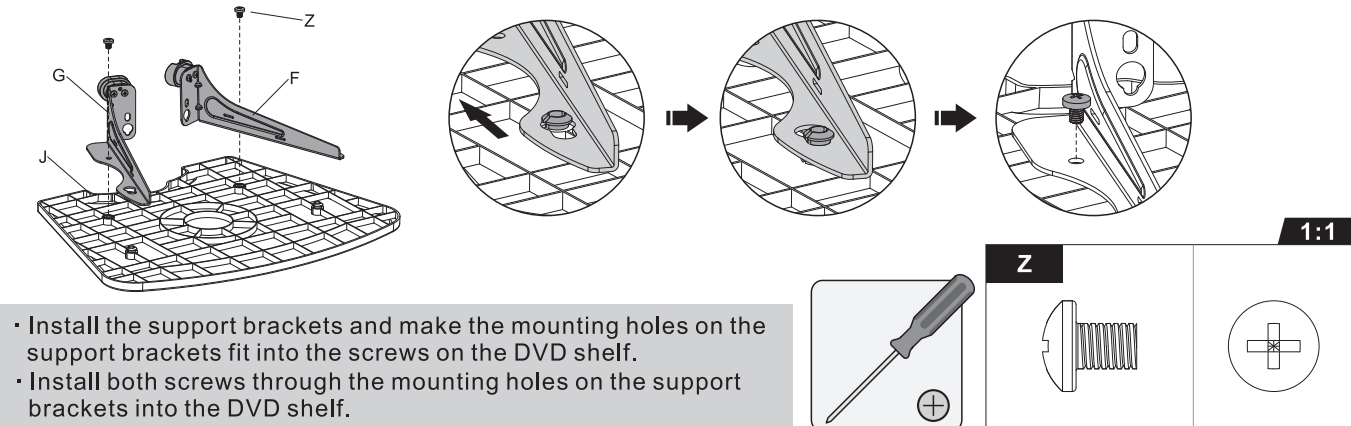
- If the display settles on its own, rotate the adjuster bar towards the "+" symbol;
- If the display rises on its own, rotate the adjuster bar towards the "-" symbol.

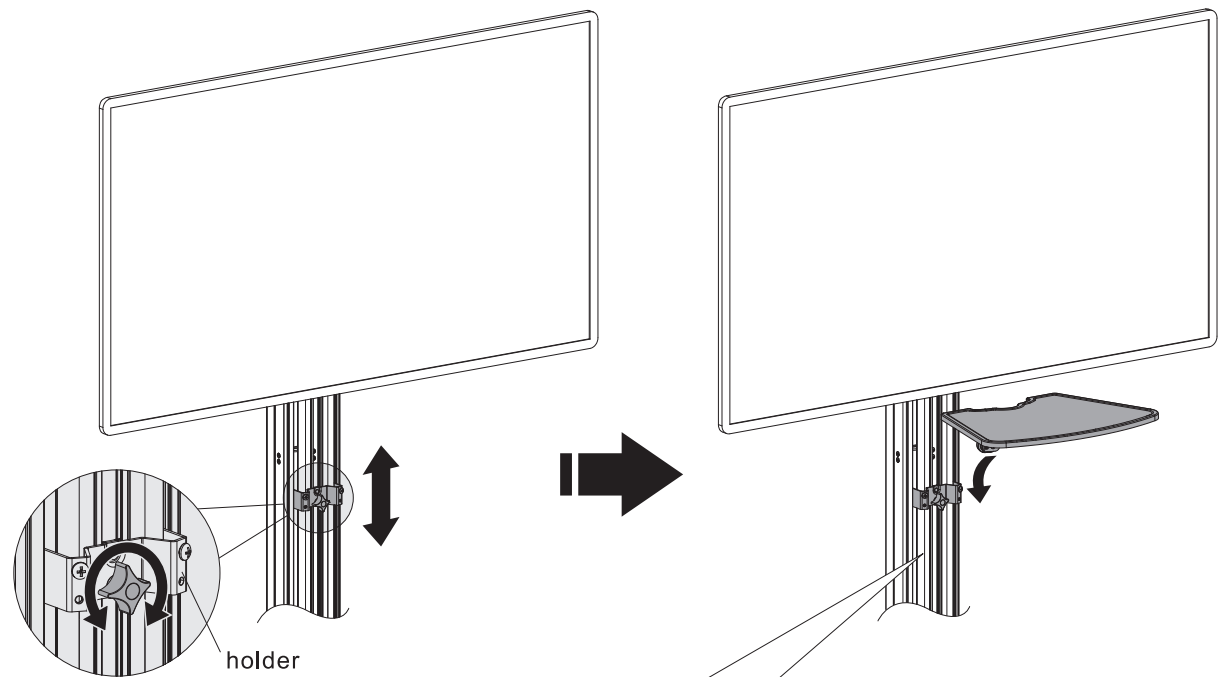


8. Cable Management

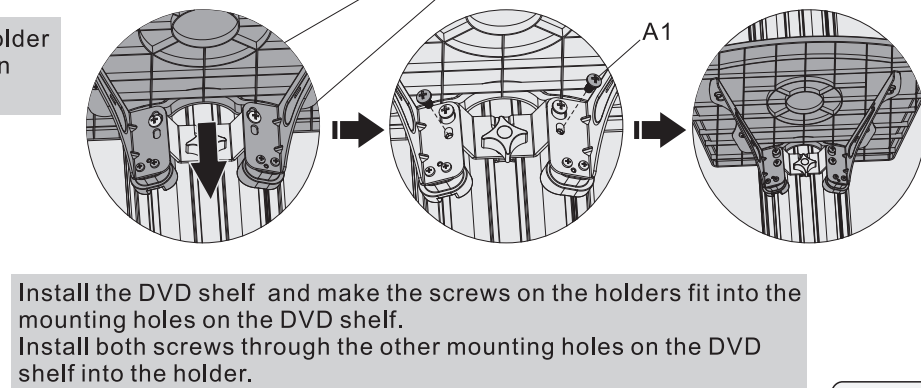
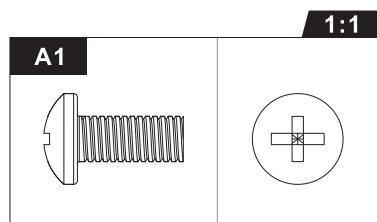


9. Installing the DVD Shelf





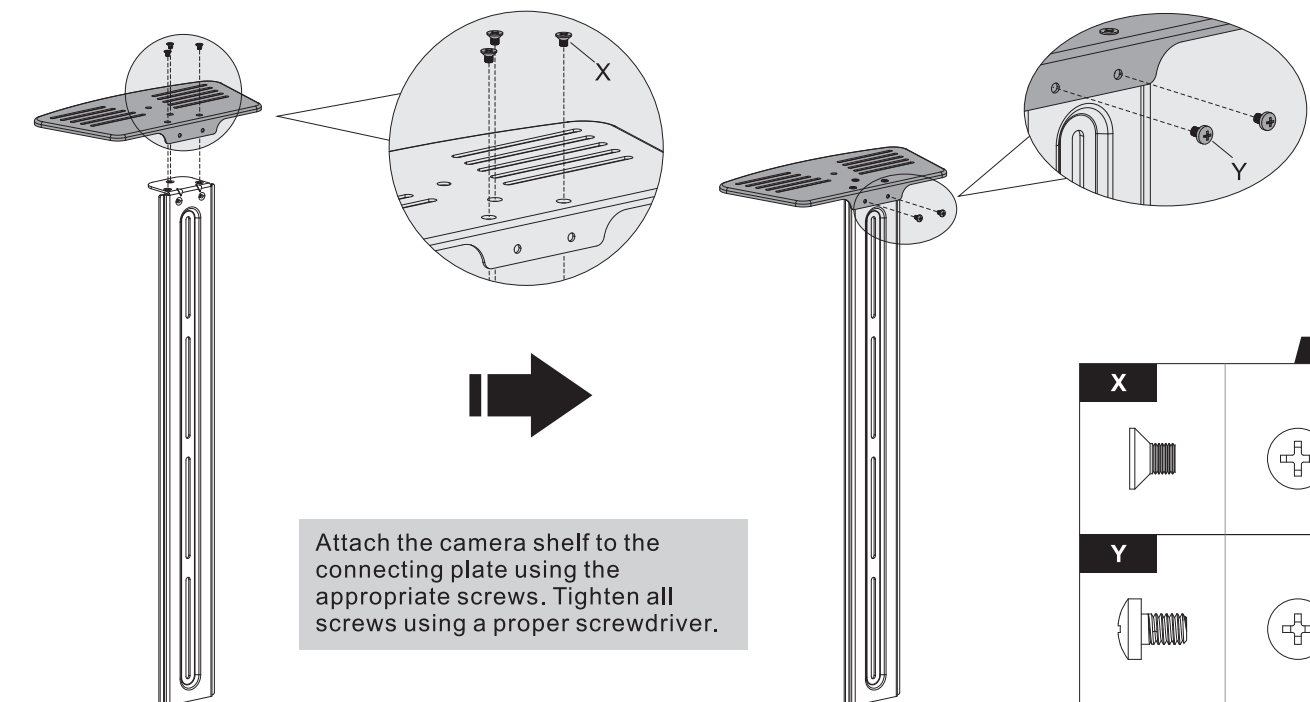
Loosen the knob to adjust the holder to the desired height then tighten the knob to secure.



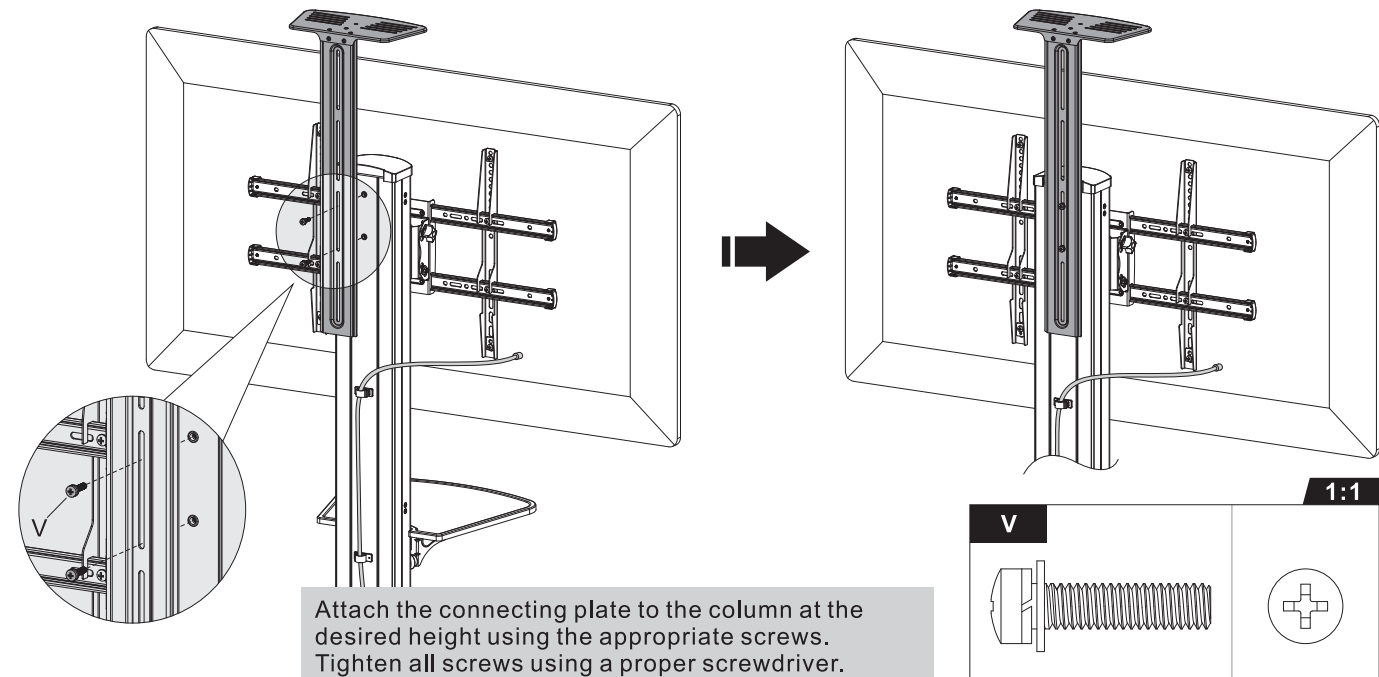
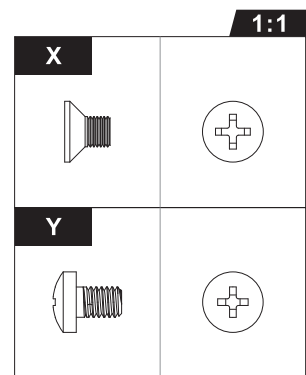
Install the DVD shelf and make the screws on the holders fit into the mounting holes on the DVD shelf. Install both screws through the other mounting holes on the DVD shelf into the holder.

Tighten all screws but do not over tighten.

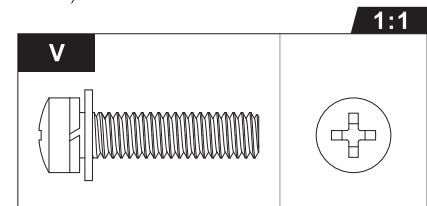
10. Installing the Camera Shelf



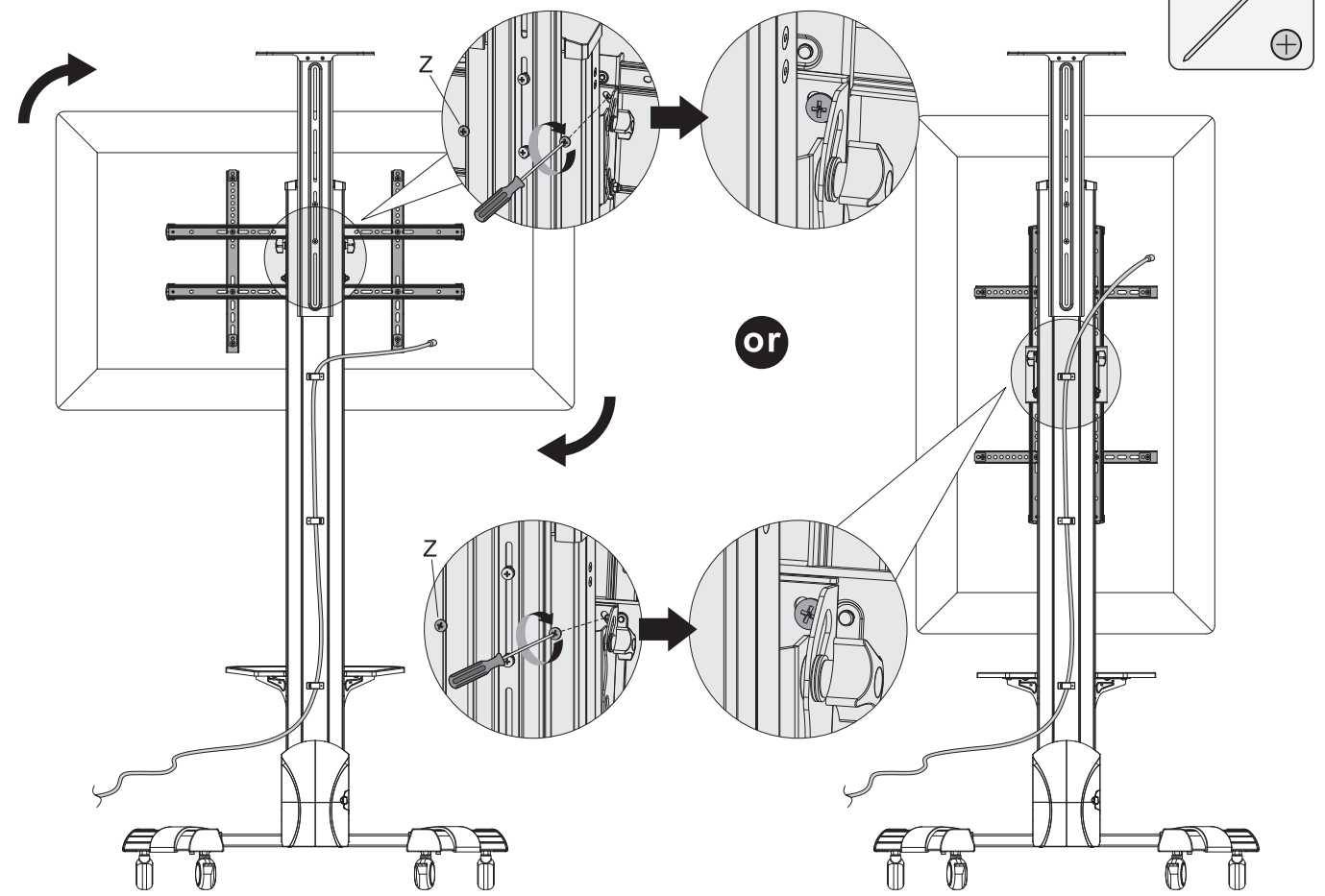
Attach the camera shelf to the connecting plate using the appropriate screws. Tighten all screws using a proper screwdriver.



Attach the connecting plate to the column at the desired height using the appropriate screws. Tighten all screws using a proper screwdriver.



11. Display Orientation



A: For landscape view
Install two screws to secure the display.
B: For portrait View
Remove the two screws to rotate the display 90° clockwise, then retighten the removed two screws to secure the display.

